



**Beaufort County**  
**Public Works**  
**Stormwater Infrastructure**  
*Project Summary*

**Project Summary:** Moultrie Circle

**Activity:** Drainage Improvement

**Narrative Description of Project:**

Project improved 680 L.F. of drainage system. Shinn cut, grubbed and reconstructed 680 L.F. of channel.  
 Constructed 680 L.F. of workshelf. Installed (1) access pipe, rip rap and hydroseeded for erosion control.

**Completion:** Mar-16

<b>2011-028 / Moultrie Circle</b>	<b>Labor Hours</b>	<b>Labor Cost</b>	<b>Equipment Cost</b>	<b>Material Cost</b>	<b>Contractor Cost</b>	<b>Indirect Labor</b>	<b>Total Cost</b>
APINS / Access pipe - installed	40.0	\$905.90	\$503.38	\$592.74	\$0.00	\$565.40	\$2,567.42
AUDIT / Audit Project	1.0	\$23.49	\$0.00	\$0.00	\$0.00	\$13.23	\$36.72
CGRB / Channel - grubbed	41.5	\$1,028.87	\$580.75	\$54.34	\$0.00	\$655.98	\$2,319.94
CREC / Channel - reconstructed	30.0	\$695.30	\$434.31	\$61.85	\$0.00	\$433.10	\$1,624.56
CSHN / Channel - Shinn cut	50.0	\$1,260.47	\$623.45	\$55.77	\$0.00	\$806.80	\$2,746.49
DEBREM / Debris Removal - Jobsite	12.0	\$267.42	\$394.53	\$91.52	\$0.00	\$159.78	\$913.25
DITCHI / Ditch - Inspection	27.3	\$673.59	\$35.40	\$7.15	\$0.00	\$427.32	\$1,143.45
HAUL / Hauling	92.5	\$2,062.60	\$776.40	\$2,180.26	\$0.00	\$1,331.47	\$6,350.72
HYDR / Hydroseeding	26.0	\$618.48	\$152.34	\$321.58	\$0.00	\$407.11	\$1,499.51
LM / Loading Materials	9.0	\$204.90	\$61.55	\$8.58	\$0.00	\$132.48	\$407.51
ONJV / Onsite Job Visit	59.0	\$1,896.37	\$174.10	\$51.68	\$0.00	\$1,250.67	\$3,372.82
PI / Project Inspection	1.0	\$45.60	\$3.62	\$1.52	\$0.00	\$33.96	\$84.70
PL / Project Layout	4.0	\$182.40	\$14.48	\$4.56	\$0.00	\$135.84	\$337.28
PROFS / Professional Services	0.0	\$0.00	\$0.00	\$0.00	\$250.00	\$0.00	\$250.00
PRRECON / Project Reconnaissance	1.0	\$30.75	\$3.54	\$1.52	\$0.00	\$18.23	\$54.04
UTLOC / Utility locates	0.5	\$12.35	\$0.00	\$0.00	\$0.00	\$6.62	\$18.97
WSGRB / Workshelf - Grubbed	52.0	\$1,225.16	\$708.55	\$131.56	\$0.00	\$762.94	\$2,828.21
WSL / Workshelf - Level	40.0	\$918.10	\$309.99	\$68.17	\$0.00	\$577.30	\$1,873.56
WSREC / Workshelf - Reconstructed	14.0	\$347.69	\$177.57	\$31.46	\$0.00	\$217.70	\$774.42
<b>2011-028 / Moultrie Circle</b>	<b>500.8</b>	<b>\$12,399.43</b>	<b>\$4,953.96</b>	<b>\$3,664.26</b>	<b>\$250.00</b>	<b>\$7,935.92</b>	<b>\$29,203.57</b>
<b>Sub Total</b>							
<b>Grand Total</b>	<b>500.8</b>	<b>\$12,399.43</b>	<b>\$4,953.96</b>	<b>\$3,664.26</b>	<b>\$250.00</b>	<b>\$7,935.92</b>	<b>\$29,203.57</b>

Before

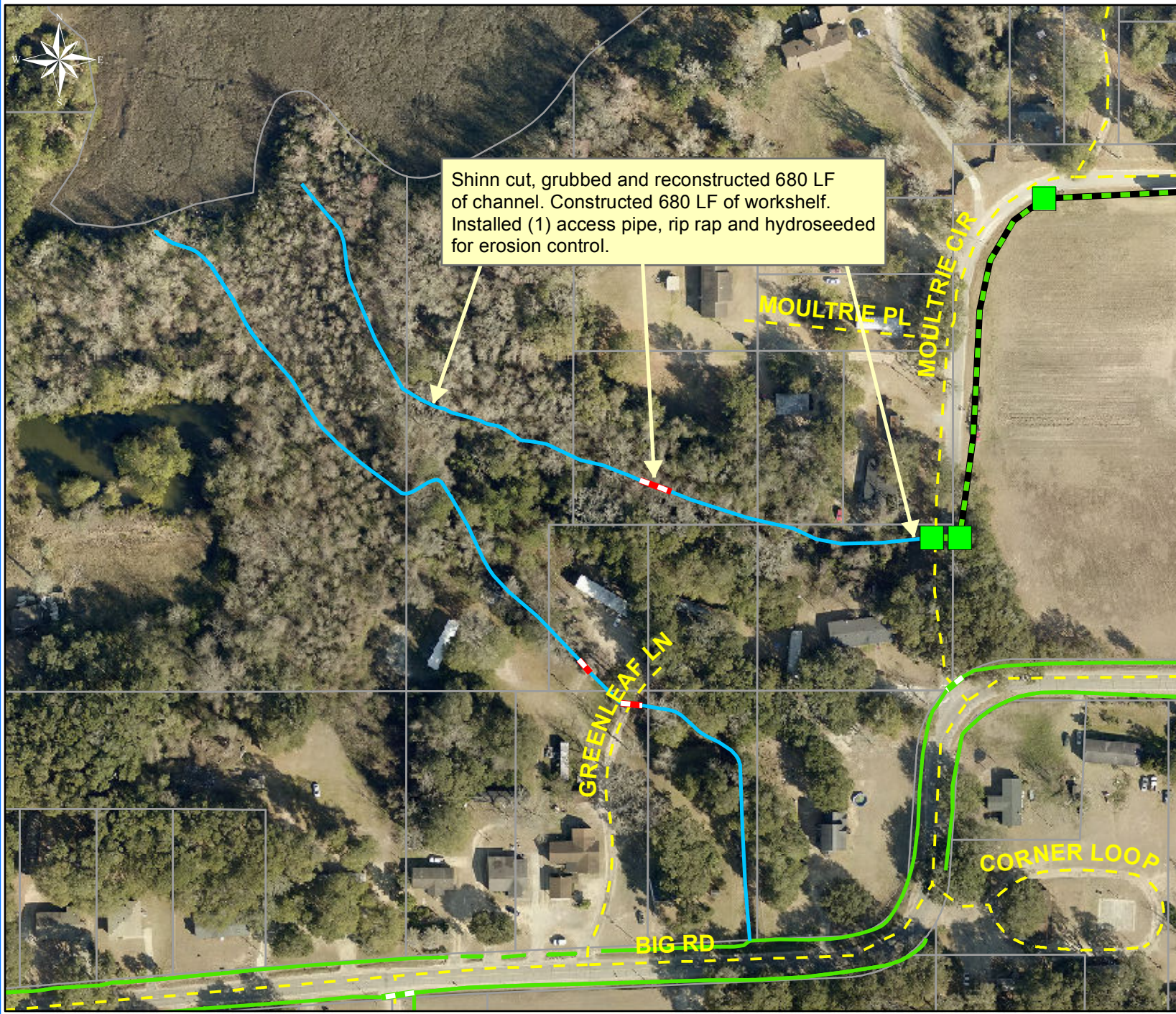


During



After





Shinn cut, grubbed and reconstructed 680 LF of channel. Constructed 680 LF of workshelf. Installed (1) access pipe, rip rap and hydroseeded for erosion control.

Project: Moultrie Circle  
 Activity: Drainage Improvement  
 Project #: 2011-028  
 Township/SW Dist: Sheldon/6  
 Completed: March 2016

Legend	
Drainage Type	
	Access Pipe
	Bleeder Pipe
	Channel Pipe
	Channel
	Stream
	Crossline Pipe
	Driveway Pipe
	Lateral
	Lateral Pipe
	River
	Road Pipe
	Roadside
	Roadside Pipe



1 inch = 170 feet